



September 12, 2016

RE: 12<sup>th</sup> Ave Road Closure Notice

Dear Property Owner:

This notice is to inform you that the Kennewick Irrigation District (KID) will be performing a project to install a 12" pipe across S. Morain St. and in the shoulder of W. 12<sup>th</sup> Ave. The project work area will be located along W. 12<sup>th</sup> Ave between S. Reed St. and S. Morain St. KID is planning to temporarily close a portion of W. 12<sup>th</sup> Ave. during installation of the new pipeline. Road closures will be re-opened each night. A map with the location of the closure has been attached on the backside of this page for your convenience. The closure is currently planned for September 14 to September 30, but is subject to change. Any updates to the schedule can be found on the KID website at [www.kid.org](http://www.kid.org), under the "News" tab.

Please note, pipeline installation will occur on the south side of W. 12<sup>th</sup> Ave. During construction it will be important for you to temporarily move any vehicles parked on the south side of W. 12<sup>th</sup> Ave.

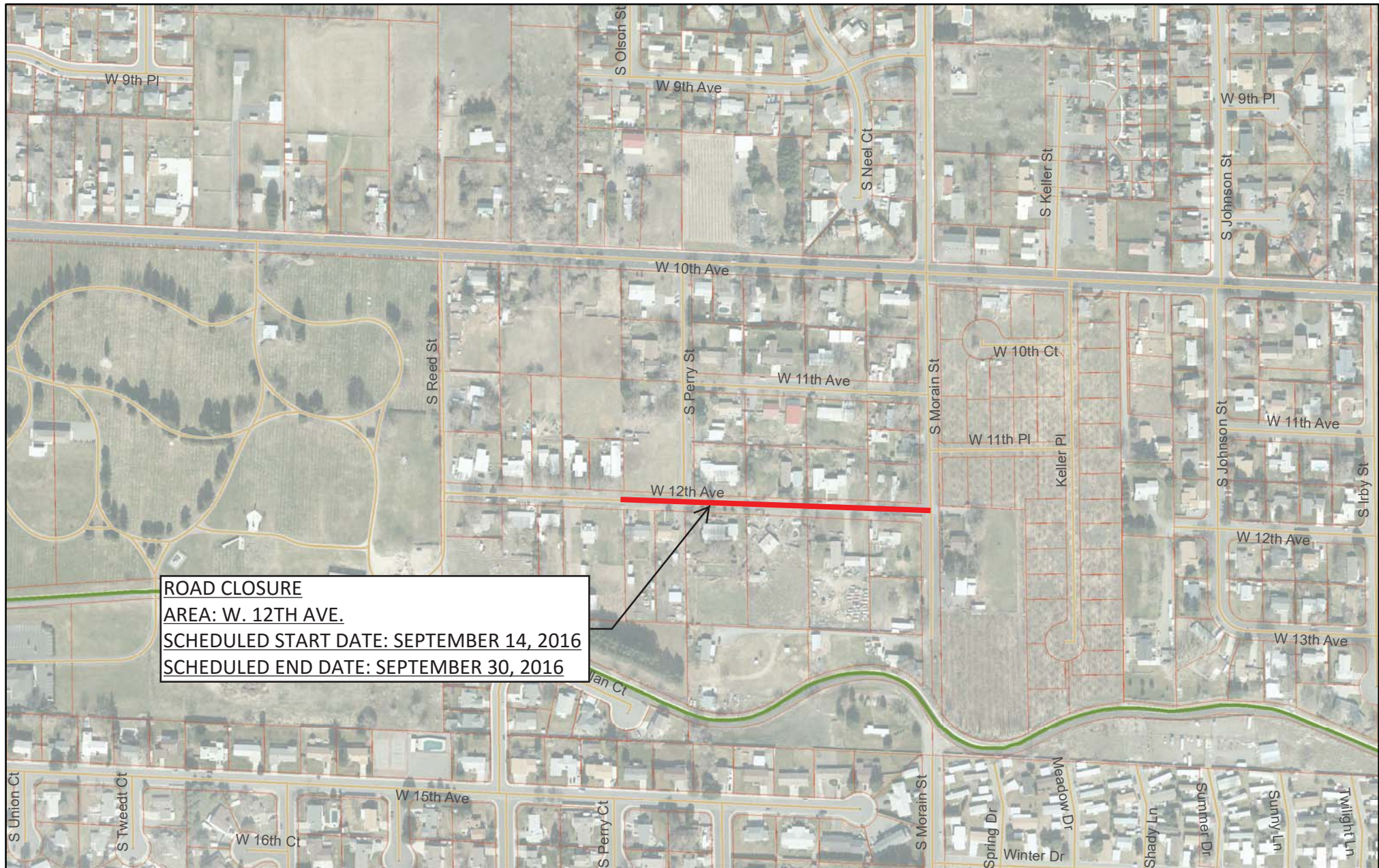
We express our appreciation to you for your cooperation during this project and apologize for any inconvenience it may cause to your commute. This project, one of many rehabilitation projects, is funded by your capital assessment dollars and will replace KID's aging infrastructure and delivery system for your property.

If you have any questions or comments, please feel free to contact one of our Customer Service Agents at 586-9111 or Daniel Tissell, KID Staff Engineer directly at 586-9111 ext. 116 or via email at [dtissell@kid.org](mailto:dtissell@kid.org).

Sincerely,

Ben Woodard, P.E.  
Assistant Engineering Manager

# W. 12th Ave. ROAD CLOSURE



0 0.0375 0.075 0.15 Miles

MAP BY:

PRINT DATE:

The Kennewick Irrigation District does not warrant, guarantee, or accept any liability for the accuracy, precision, or completeness of any information shown or described herein or for any inferences made therefrom. Any use made of this information is solely at the risk of the user.

