

STANDARD DETAILS

Service Line Trench Detail

Main Line Trench Detail

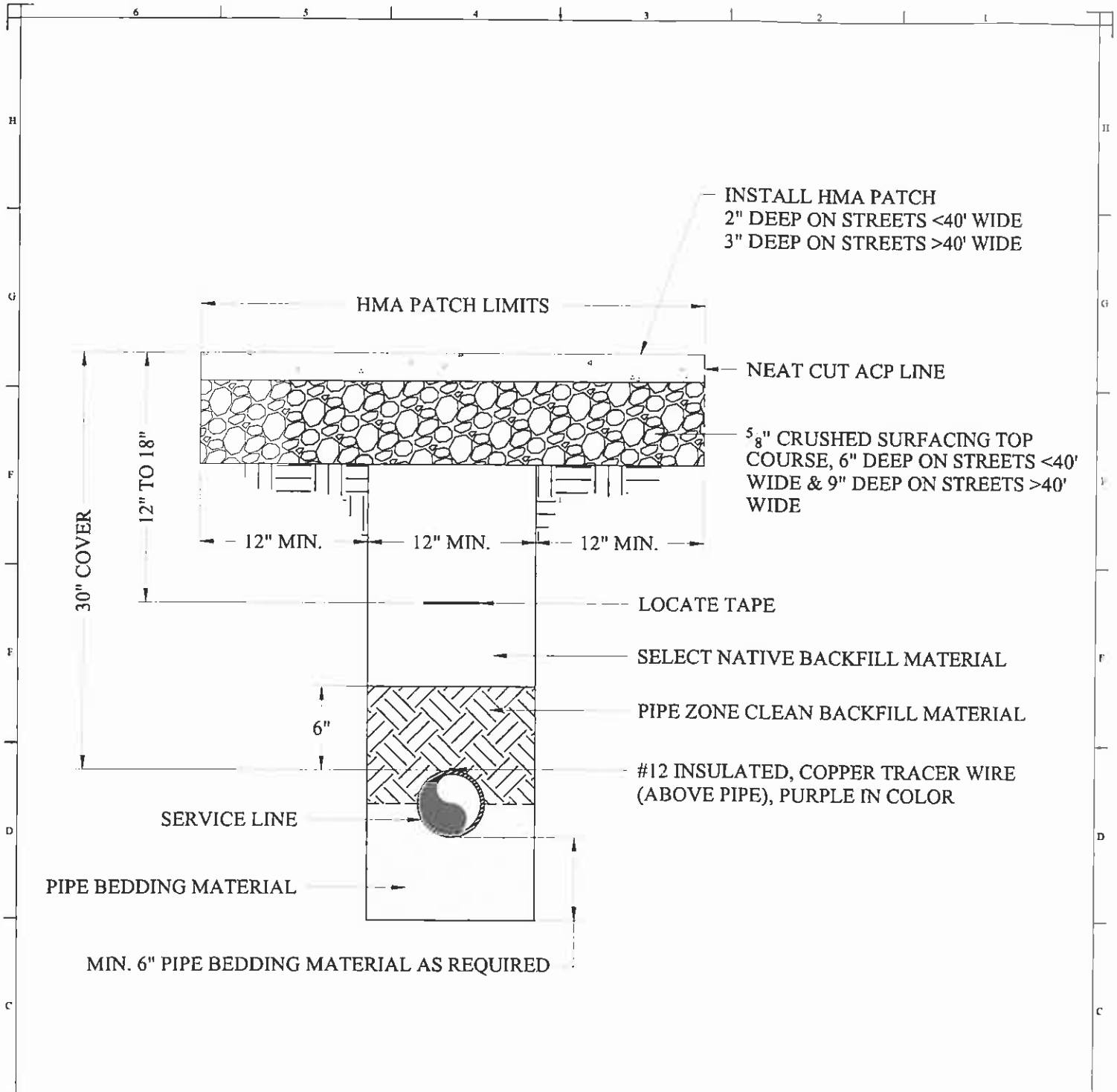
Blow-Off Assembly

1-1/4" Irrigation Service – Type B Riser

2" Irrigation Riser – Type B Riser

System Drain into Manhole

45-Mil EPDM Canal Lining Detail



INSTALL HMA PATCH
 2" DEEP ON STREETS <40' WIDE
 3" DEEP ON STREETS >40' WIDE

HMA PATCH LIMITS

NEAT CUT ACP LINE

5/8" CRUSHED SURFACING TOP COURSE, 6" DEEP ON STREETS <40' WIDE & 9" DEEP ON STREETS >40' WIDE

30" COVER

12" TO 18"

12" MIN.

12" MIN.

12" MIN.

LOCATE TAPE

SELECT NATIVE BACKFILL MATERIAL

PIPE ZONE CLEAN BACKFILL MATERIAL

#12 INSULATED, COPPER TRACER WIRE (ABOVE PIPE), PURPLE IN COLOR

SERVICE LINE


6"

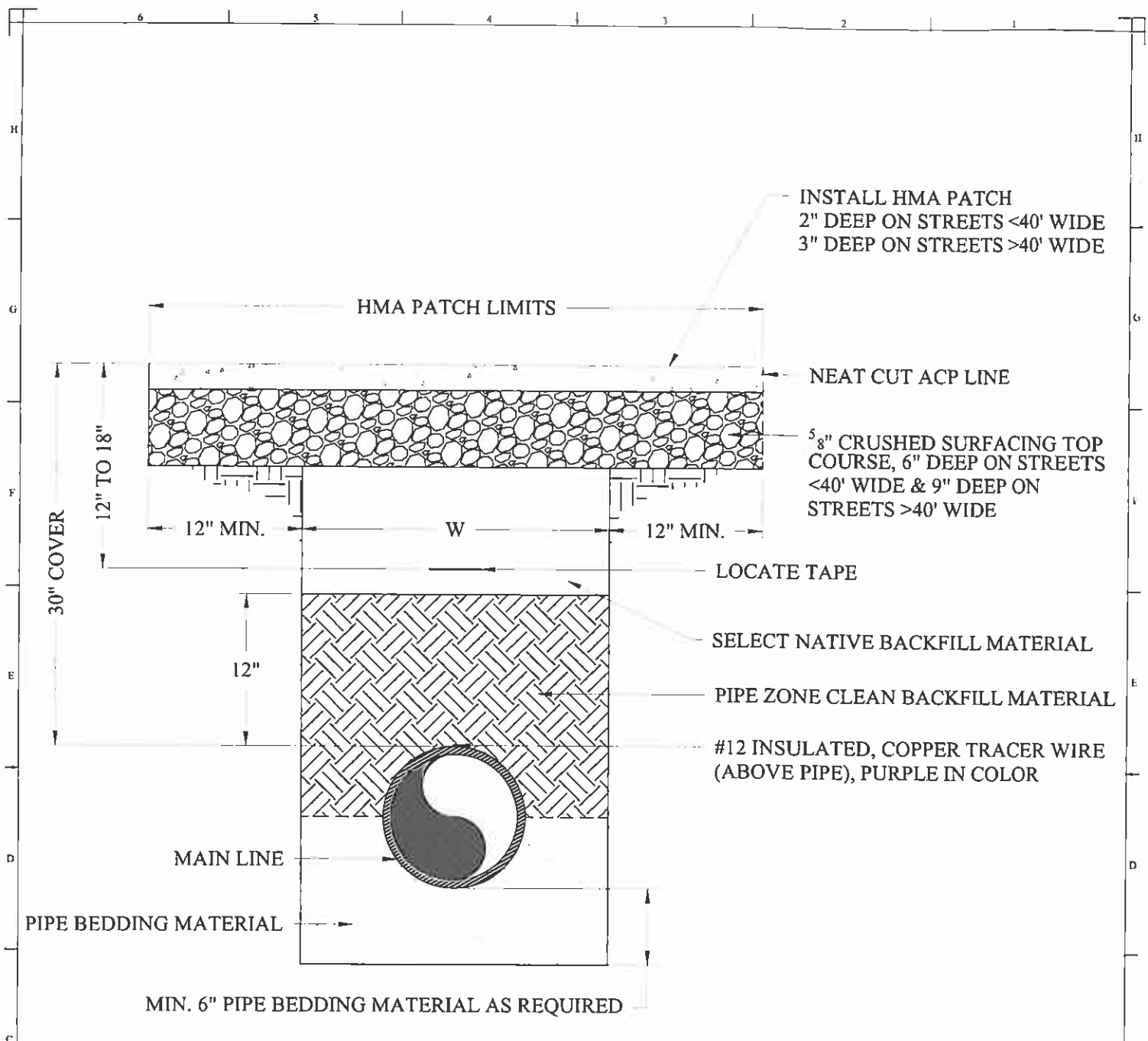
PIPE BEDDING MATERIAL

MIN. 6" PIPE BEDDING MATERIAL AS REQUIRED

SERVICE LINE TRENCH DETAIL

NOT TO SCALE

PROJECT: MID-STDTLS	SHEET 1 OF 1	KENNEWICK IRRIGATION DISTRICT		DWG DATE: 8/26/07 DNG SCALE: N.T.S. DESIGN BY: CDS DRAWN BY: CHECKED BY:	DATE: APPROVED BY:	 KENNEWICK IRRIGATION DISTRICT 12 W. KENNEWICK AVE. KENNEWICK, WASHINGTON 99336 (509) 586-9111 WWW.KID.ORG	DRAWING REVISIONS		
	TRENCH DETAIL		REV 0				8/28/07		
	SERVICE LINE								



NOTE:
TRENCH WIDTH "W" SHALL BE 40 INCHES MAX. FOR 15 INCH DIA. AND SMALLER PIPES AND 1-1/2 TIMES THE INSIDE DIAMETER PLUS 18 INCHES MAX. FOR 18 INCH DIA. AND LARGER PIPES.

MAIN LINE TRENCH DETAIL

NOT TO SCALE

PROJECT: KID-STRD-0715	SHEET 1 OF 1	KENNEWICK IRRIGATION DISTRICT	DWG DATE: 8/28/07	DATE:	APPROVED BY:	 KENNEWICK IRRIGATION DISTRICT 12 W. KENNEWICK AVE. KENNEWICK, WASHINGTON 99336 (509) 586-9111 WWW.KID.ORG	DRAWING REVISIONS
	TRENCH DETAIL	MAIN LINE	DWG SCALE: N.T.S.				REV 0 8/29/07
			DESIGN BY: CDB				
			DRAWN BY:				
			CHECKED BY:				

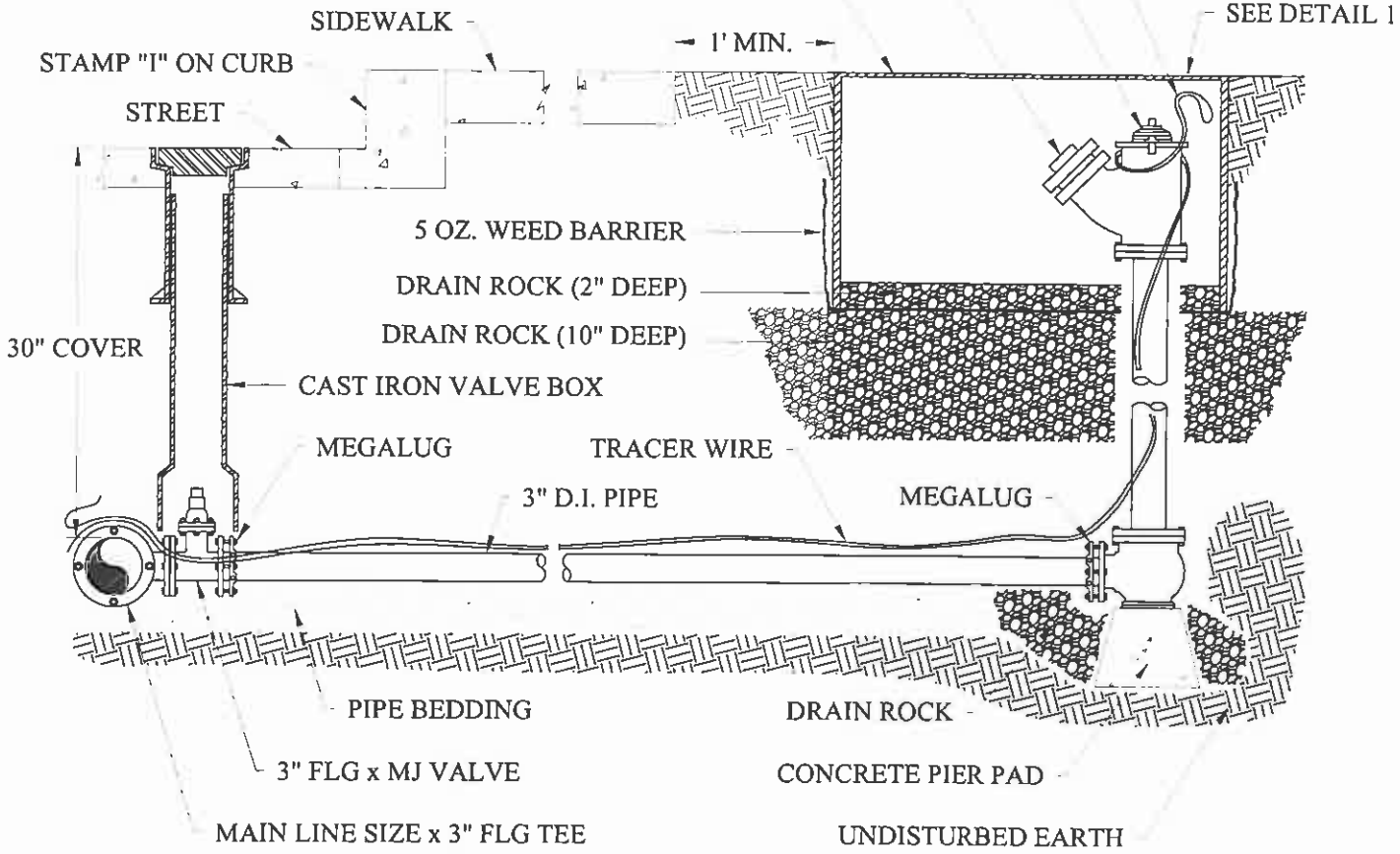
**RECLAIMED WATER
DO NOT DRINK**

**DETAIL 1 (LOCKING VALVE BOX COVER)
SCALE: NONE**

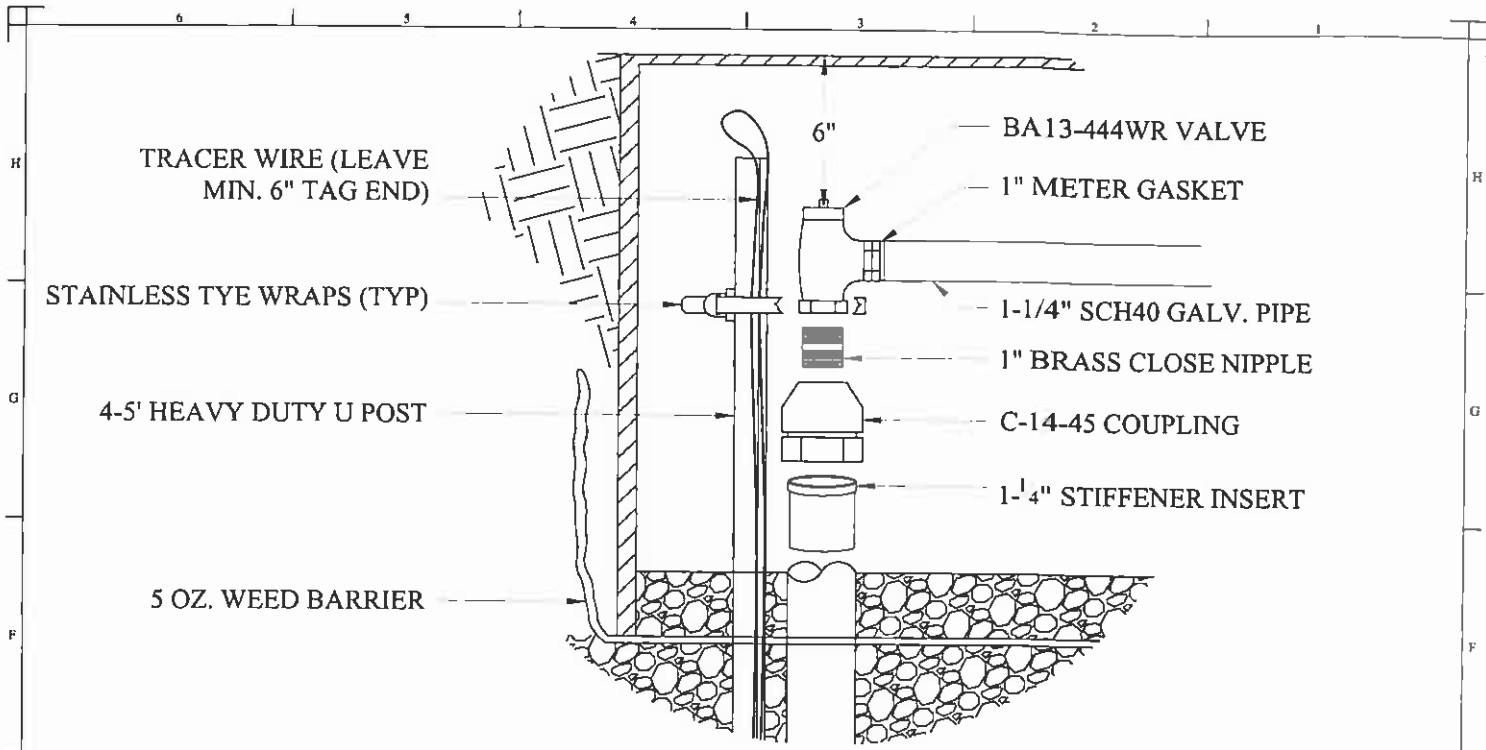
NOTE: MAKE SURE WIRE REACHES TOP OF BOX

FLUSH MODEL BLOW-OFF HYDRANT
2-1/2" FIRE HOSE NOZZLE
(4)NST PER INCH

MSBCF1730-18XL VALVE BOX & SOLID LOCKING LID
NOTE: LAY DOWN 5 OZ. WEED BARRIER, SET BOX,
COVER WITH DRAIN ROCK, AND WRAP MATERIAL UP
OUTSIDE OF BOX

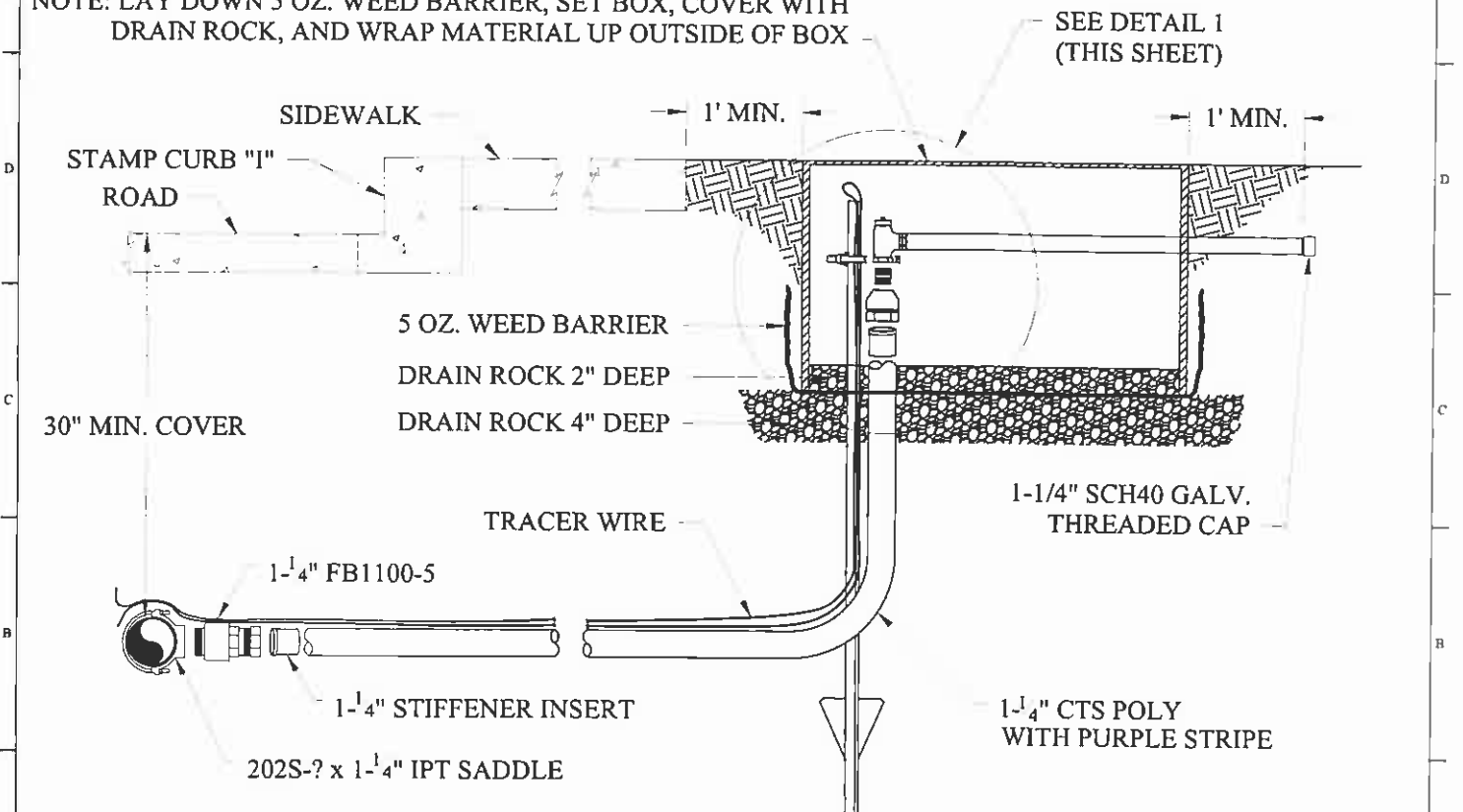



PROJECT: MIB-STD-BTL8	SHEET 1 OF 1	KENNEWICK IRRIGATION DISTRICT BLOW-OFF ASSEMBLY	DWG DATE: 8/13/07 DWG SCALE: NTS DESIGN BY: CDS DRAWN BY: CHECKED BY:	APPROVED BY: DATE:	 KENNEWICK IRRIGATION DISTRICT 12 W. KENNEWICK AVE. KENNEWICK, WASHINGTON 99336 (509) 586-9111 WWW.KID.ORG	DRAWING REVISIONS REV 0 8/13/07 <hr/> <hr/> <hr/> <hr/> <hr/>					
	<table border="0" style="width: 100%;"> <tr> <td style="width: 10%; text-align: center;">6</td> <td style="width: 10%; text-align: center;">5</td> <td style="width: 10%; text-align: center;">4</td> <td style="width: 10%; text-align: center;">3</td> <td style="width: 10%; text-align: center;">2</td> <td style="width: 10%; text-align: center;">1</td> </tr> </table>						6	5	4	3	2
6	5	4	3	2	1						

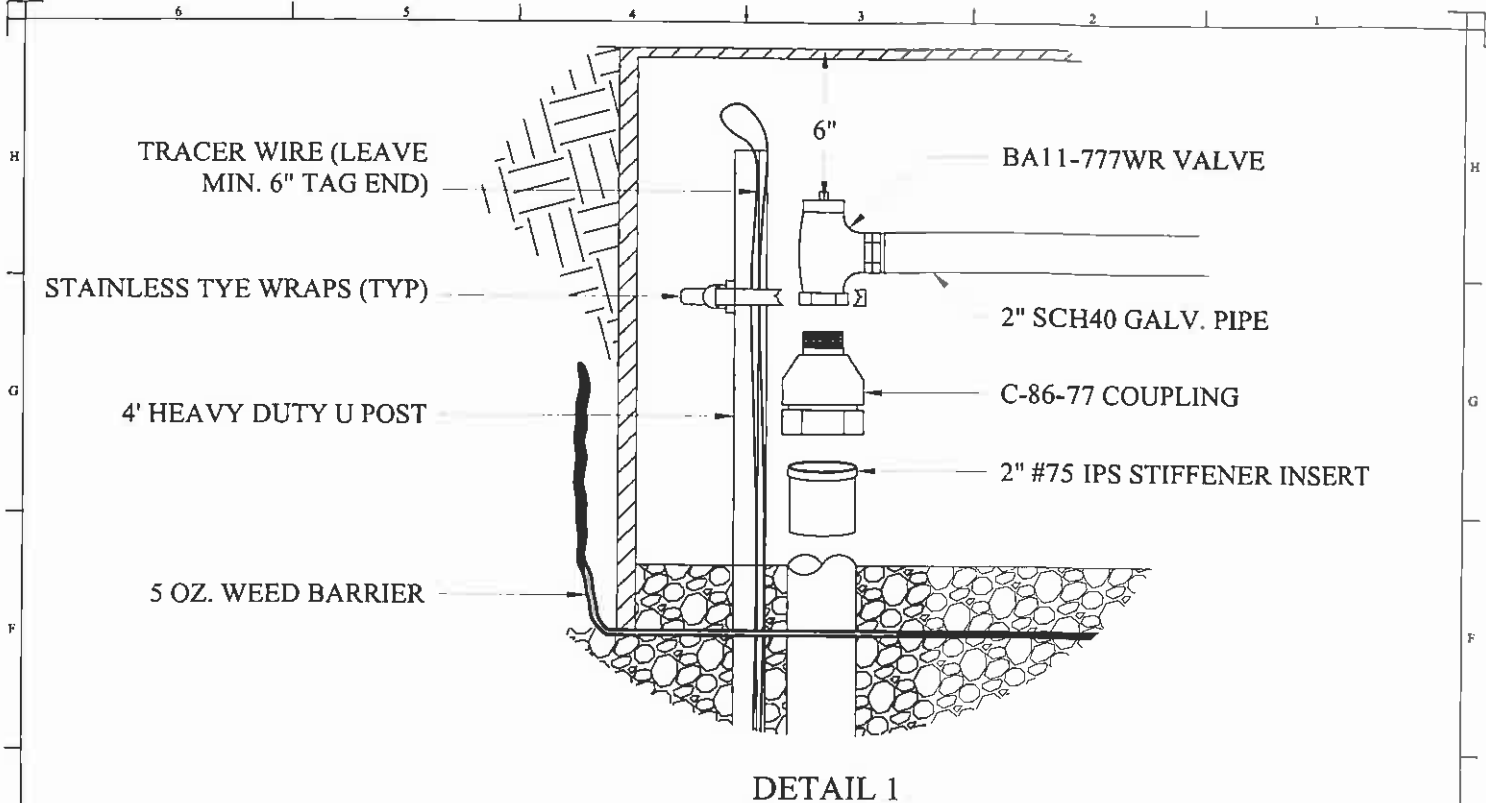


DETAIL 1

MS BCF 1730-18XL VALVE BOX & POLYMER COMPOSITE LID,
 PURPLE IN COLOR AND STAMPED "KID - DO NOT DRINK"
 NOTE: LAY DOWN 5 OZ. WEED BARRIER, SET BOX, COVER WITH
 DRAIN ROCK, AND WRAP MATERIAL UP OUTSIDE OF BOX



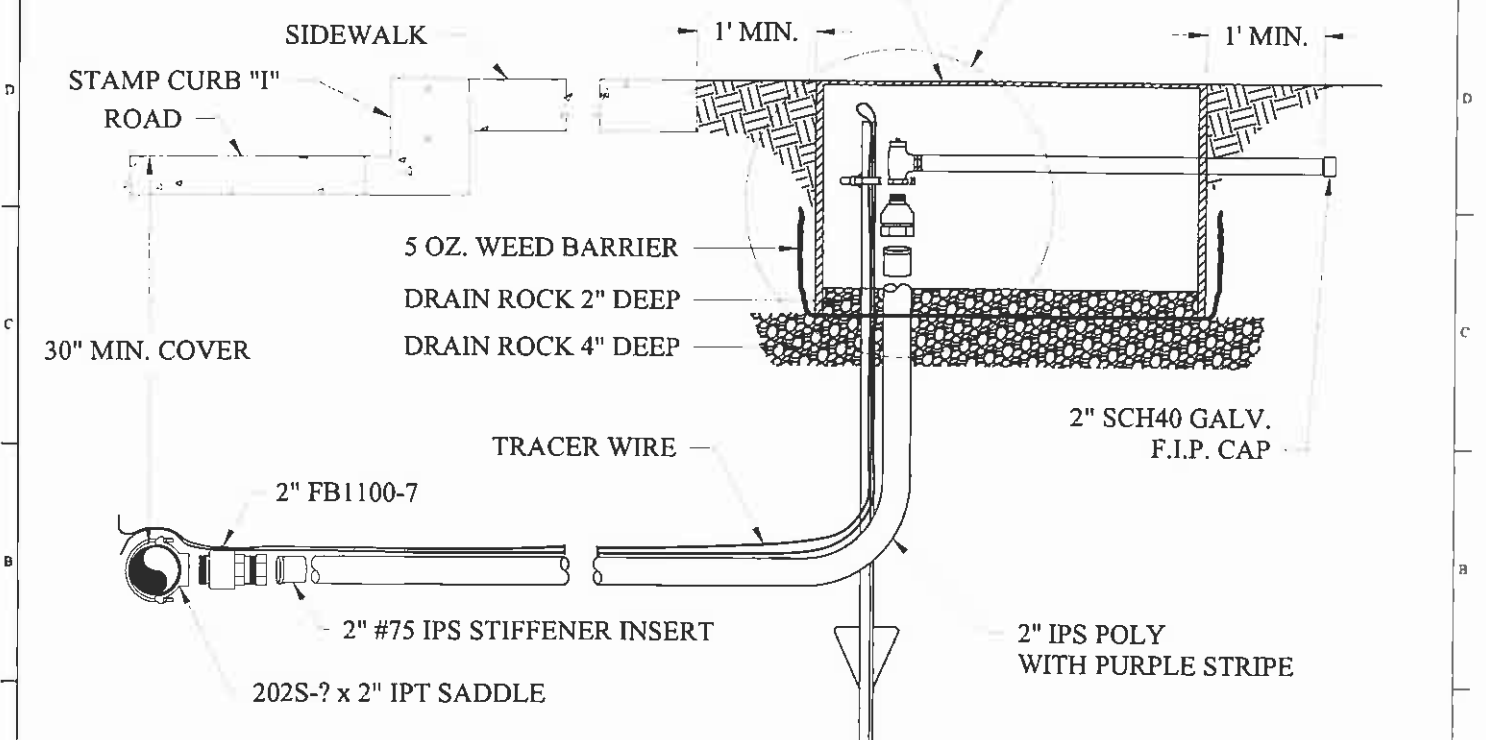
PROJECT KID-DETAILS	SHEET 1 of 1	KENNEWICK IRRIGATION DISTRICT 1-1/4" IRR. SERVICE TYPE B RISER	DESIGNED BY NTS	DATE 1/12/2010	APPROVED BY DATE	 KENNEWICK IRRIGATION DISTRICT 12 W. KENNEWICK AVE. KENNEWICK, WASHINGTON 99336 (509) 586-9111 WWW.KID.ORG	DRAWING REVISIONS 1 1/12/2010
			DRAWN BY CBS	CHECKED BY			



DETAIL 1

MS BCF 1730-18XL VALVE BOX & POLYMER COMPOSITE LID,
 PURPLE IN COLOR AND STAMPED "KID - DO NOT DRINK"
 NOTE: LAY DOWN 5 OZ. WEED BARRIER, SET BOX, COVER WITH
 DRAIN ROCK, AND WRAP MATERIAL UP OUTSIDE OF BOX

SEE DETAIL 1
 (THIS SHEET)



PROJECT NO: STD-00114	SHEET 1 OF 1	KENNEWICK IRRIGATION DISTRICT 2" IRR. SERVICE TYPE B RISER	DWG DATE: 1/12/2010 DWG SCALE: N.T.S. DESIGN BY: N.T.S. DRAWN BY: CDS CHECKED BY:	DATE: _____ APPROVED BY: _____	<p> KENNEWICK IRRIGATION DISTRICT 12 W. KENNEWICK AVE. KENNEWICK, WASHINGTON 99336 (509) 586-9111 WWW.KID.ORG </p>	DRAWING REVISIONS 1 1/12/2010
			DRAWING FILEPATH R:\STANDARD SPECIFICATIONS\2010 STANDARD SPECIFICATIONS	_____ _____ _____ _____ _____ _____		

KENNEWICK IRRIGATION DISTRICT SYSTEM DRAIN INTO MANHOLE

SHEET 1 OF 1

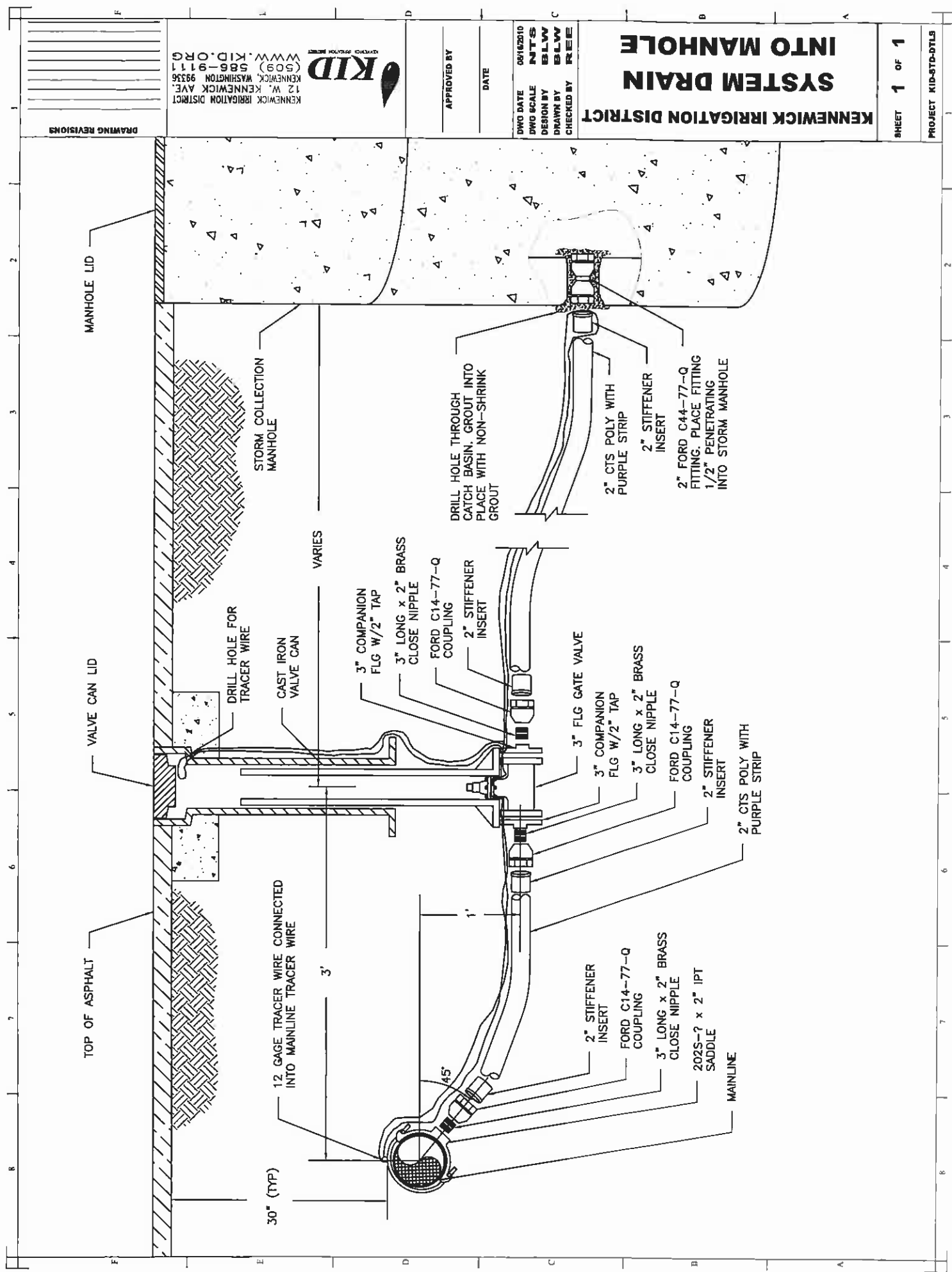
PROJECT KID-STD-DT15

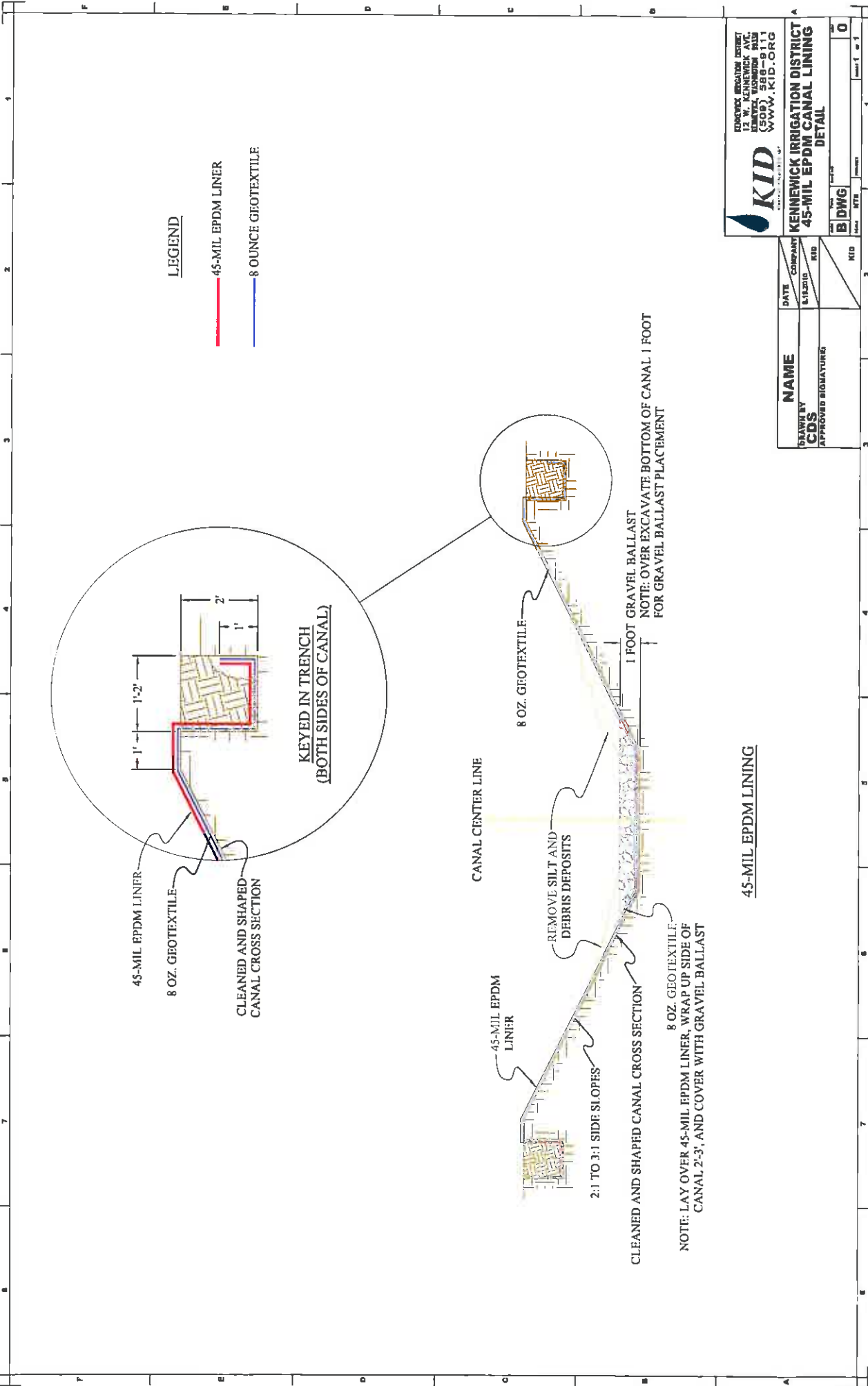
DWG DATE 08/18/2010
 DWG SCALE N.T.S.
 DESIGN BY BLW
 DRAWN BY BLW
 CHECKED BY REE

APPROVED BY _____
 DATE _____

KID
 KENNEWICK IRRIGATION DISTRICT
 12 W. KENNEWICK AVE.
 KENNEWICK, WASHINGTON 99336
 WWW.KID.ORG
 (509) 438-9111

DRAWING REVISIONS

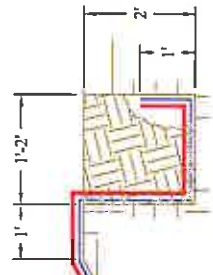




LEGEND

- 45-MIL EPDM LINER
- 8 OUNCE GEOTEXTILE

**KEYED IN TRENCH
(BOTH SIDES OF CANAL)**



45-MIL EPDM LINER
8 OZ. GEOTEXTILE
CLEANED AND SHAPED
CANAL CROSS SECTION

CANAL CENTER LINE

45-MIL EPDM
LINER

REMOVE SILT AND
DEBRIS DEPOSITS

2:1 TO 3:1 SIDE SLOPES

CLEANED AND SHAPED CANAL CROSS SECTION

8 OZ. GEOTEXTILE
NOTE: LAY OVER 45-MIL EPDM LINER, WRAP UP SIDE OF
CANAL 2'-3', AND COVER WITH GRAVEL BALLAST

GRAVEL BALLAST

NOTE: OVER EXCAVATE BOTTOM OF CANAL 1 FOOT
FOR GRAVEL BALLAST PLACEMENT

45-MIL EPDM LINING

KID
KENNEDY IRRIGATION DISTRICT
12 W. KENNEDY AVE.
DUBOIS, WY 82513
(307) 588-9111
WWW.KID.ORG

NAME	COMPANY	DATE	SCALE
CDS	KID	8/13/20	AS SHOWN
APPROVED SIGNATURE		DWG	
KID		0	
		Sheet 1 of 1	