

Changes in Ground-Water Levels and Ground-Water Budgets, from Predevelopment to 1986, in Parts of the Pasco Basin, Washington

U.S. GEOLOGICAL SURVEY
Water-Resources Investigations Report 96-4086

Prepared in cooperation with
WASHINGTON STATE DEPARTMENT OF ECOLOGY



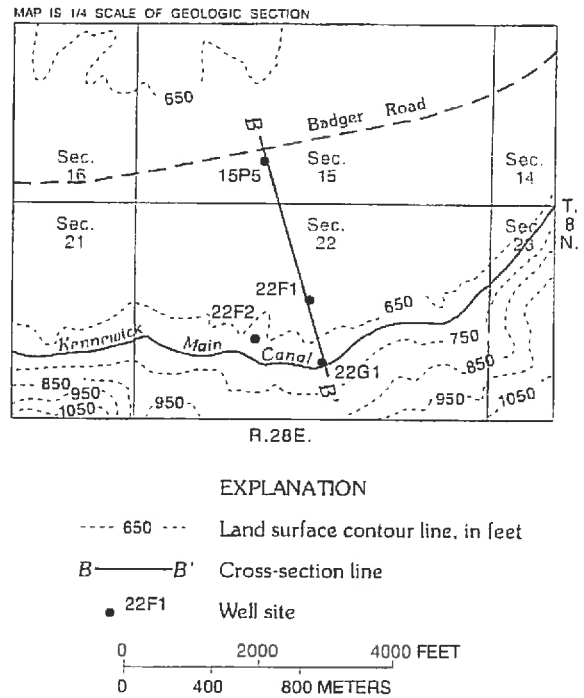
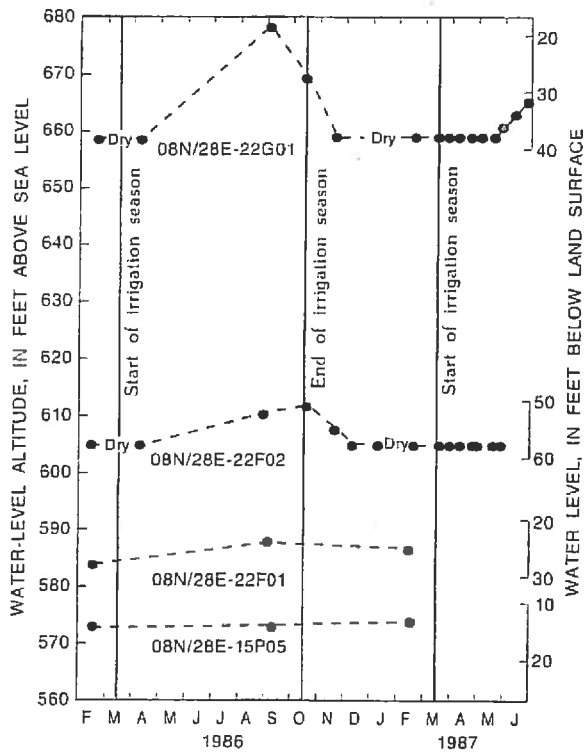
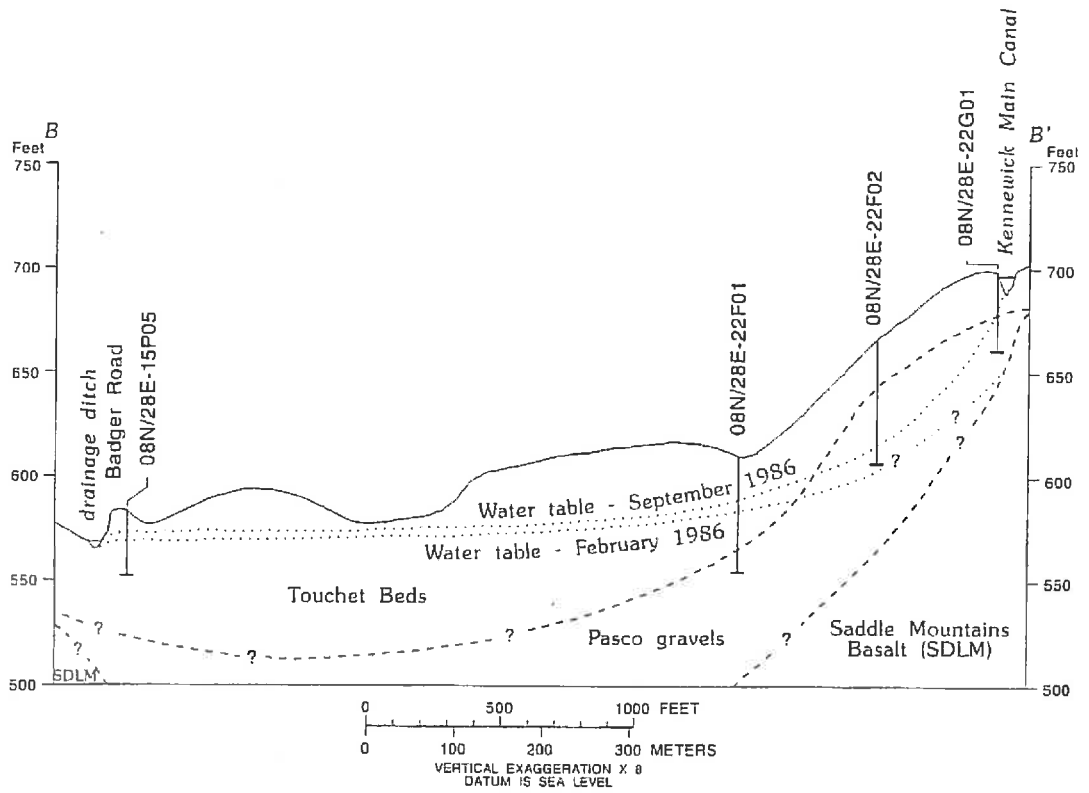
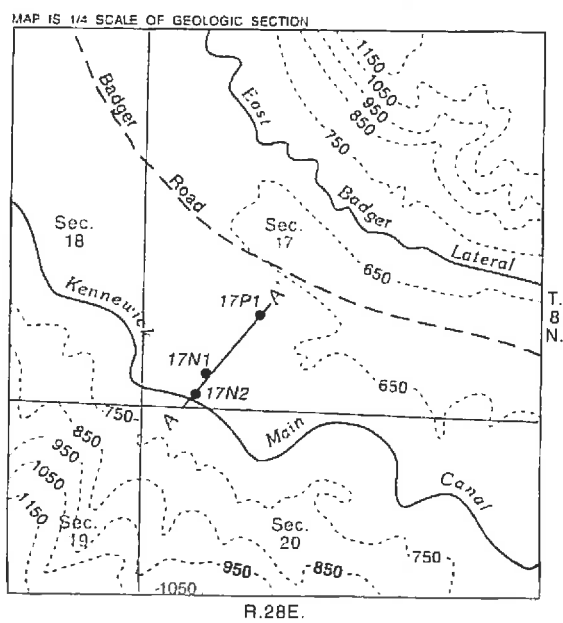
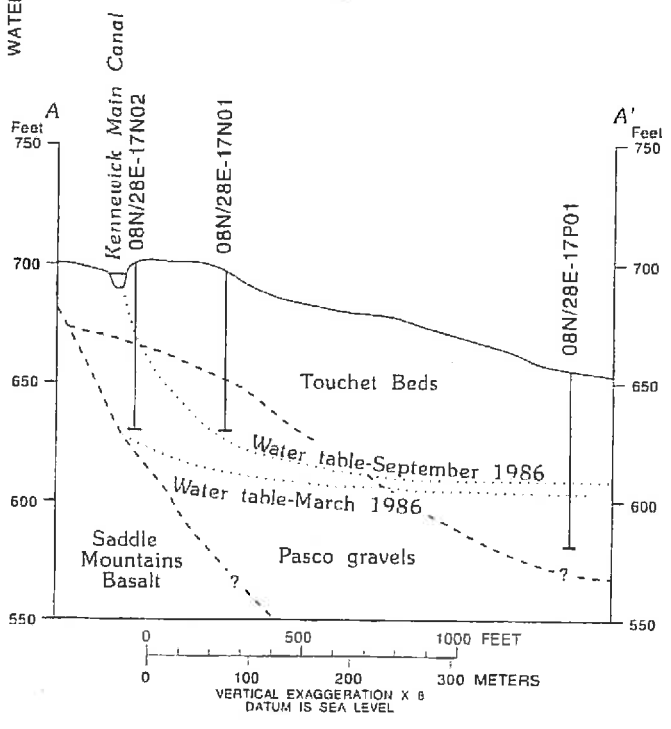
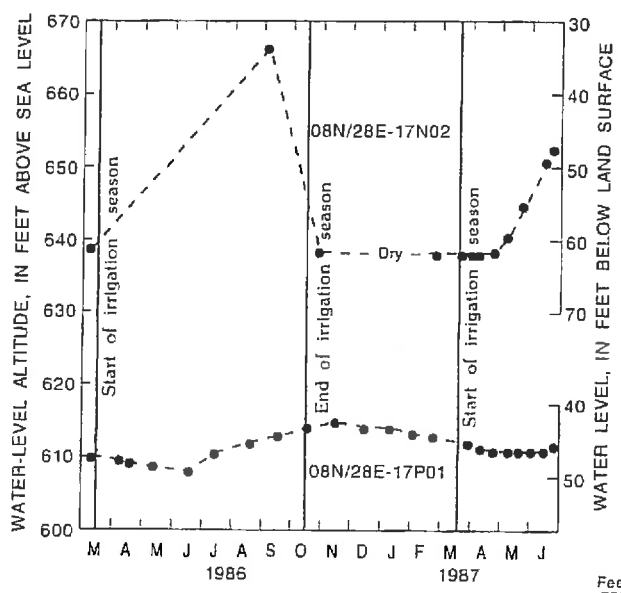


Figure 36.--Effect of canal seepage on the water table in eastern Badger Coulee, February 1986 through June 1987.



- EXPLANATION**
- 650 --- Land surface contour line, in feet
 - A ——— A' Geologic-section line
 - 17N2 Well site
- 0 1500 3000 FEET
0 300 600 METERS

Figure 35.—Effect of canal seepage on the water table in central Badger Coulee, March 1986 through June 1987.