

Designation:

05.07 AMON WASTEWAY

Location: From end of Main Canal, Division 3, Station 1301+25± to near mouth of Yakima River.

Description: 243 cfs capacity overflow weir and 2 42-inch x 30-inch cast iron slide gates with 485 feet of regular 14-foot bottom width random excavation and diking in Amon Draw to confine and direct waste water flow to Yakima River. 45 feet of 3-inch unreinforced concrete lining upstream of wasteway headworks - all constructed under Spec. DC-4323.

Relocated Properties:

(a) Culverts, twin 72-inch diameter CMP at:

- |  |        |
|--|--------|
| (1) Station 47+72.04, on Amon Wasteway | 1 each |
| (2) Station 4+94, on Clodfelter Road   | 1 each |

(b) Road, Hildebrand, .85 miles of 16-foot roadway, with 4 inches of selected surfacing, Station 0+00 to 5+37 and 24+18.3 to 44+85

1 job

(c) Culvert, 78-inch diameter x 154.5 feet of liner plate under N.P. Railroad, at Station 79+36.52

1 each

(d) Dike, rock, at Station 237+06

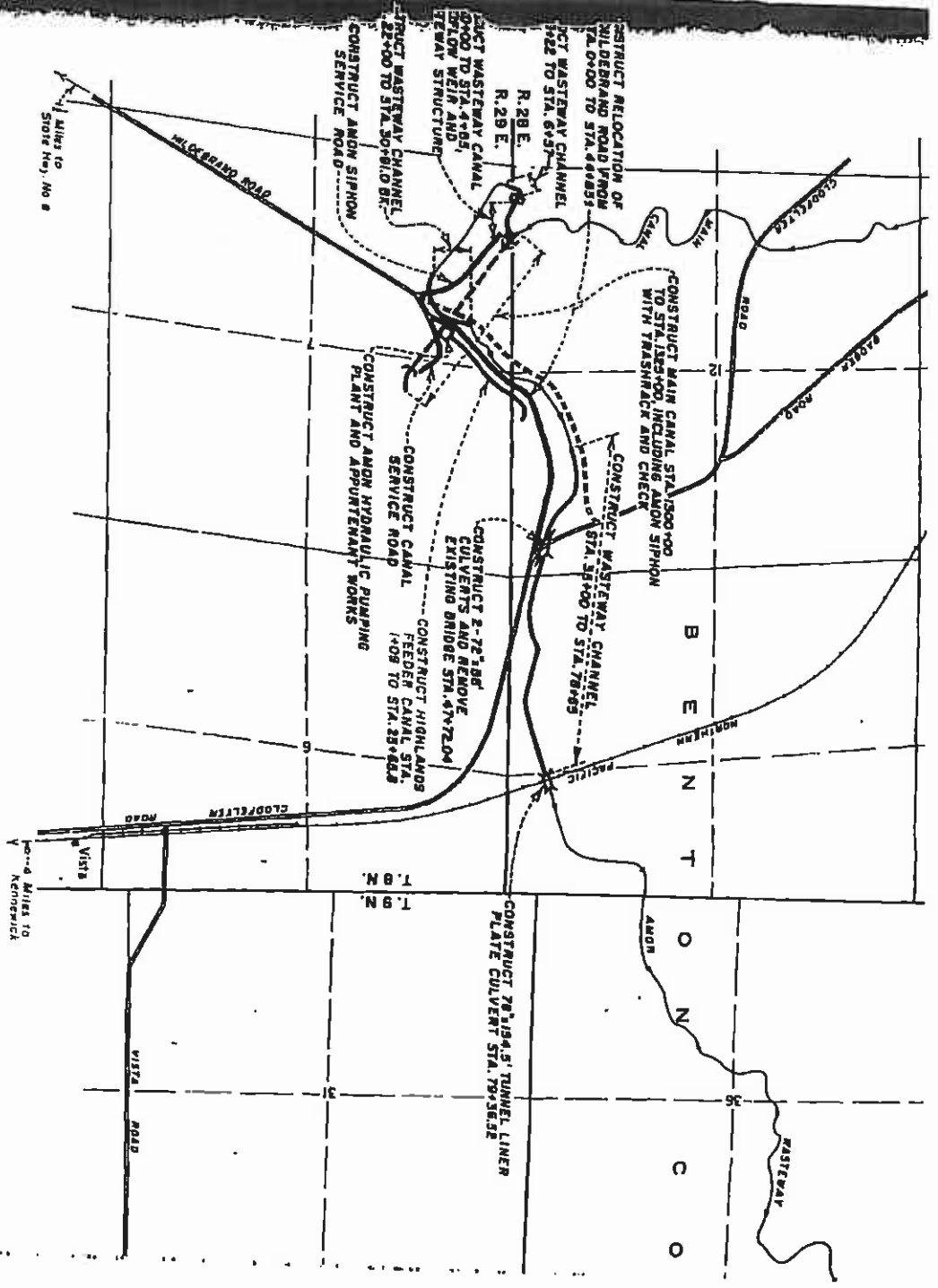
1 each

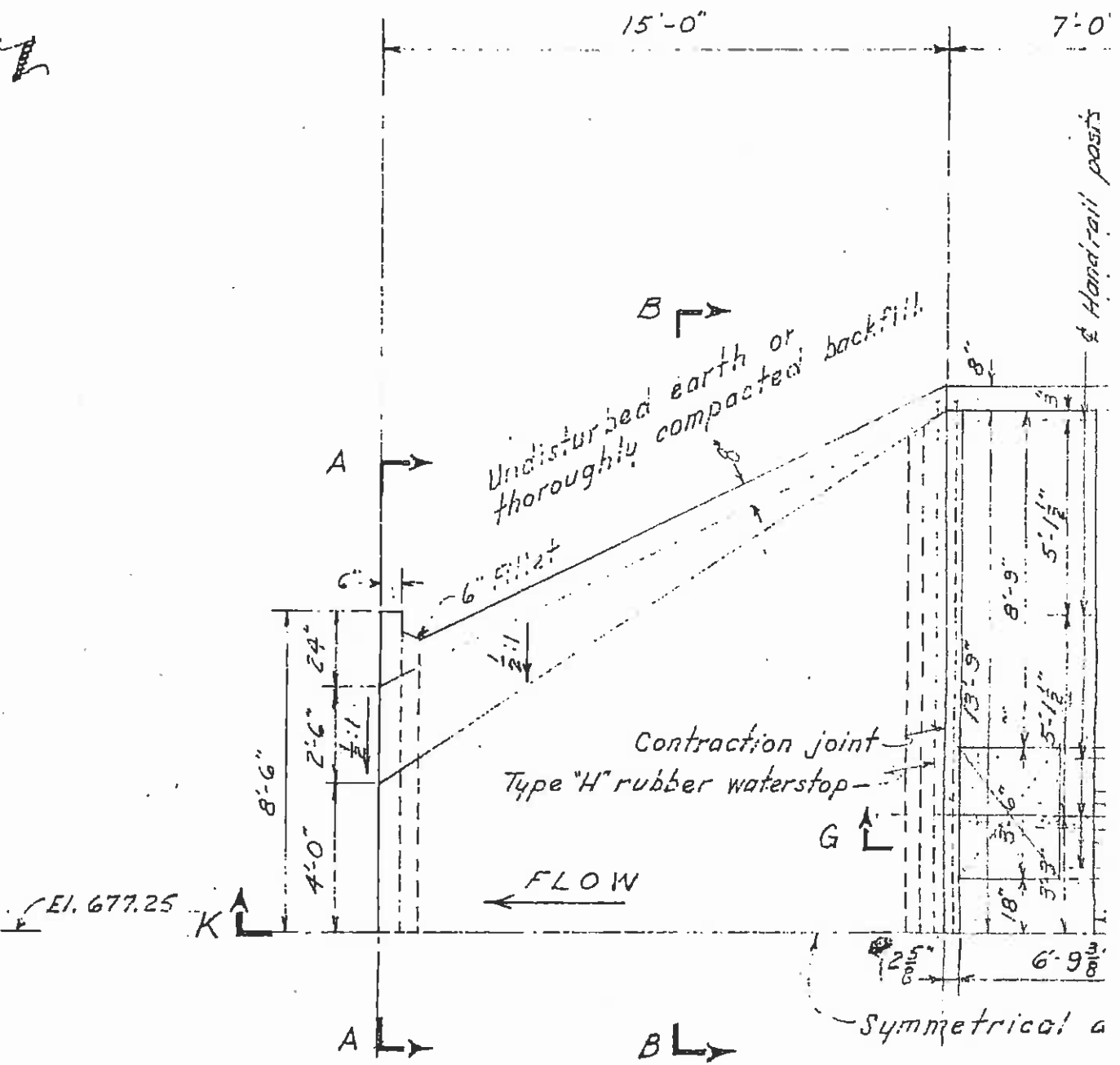
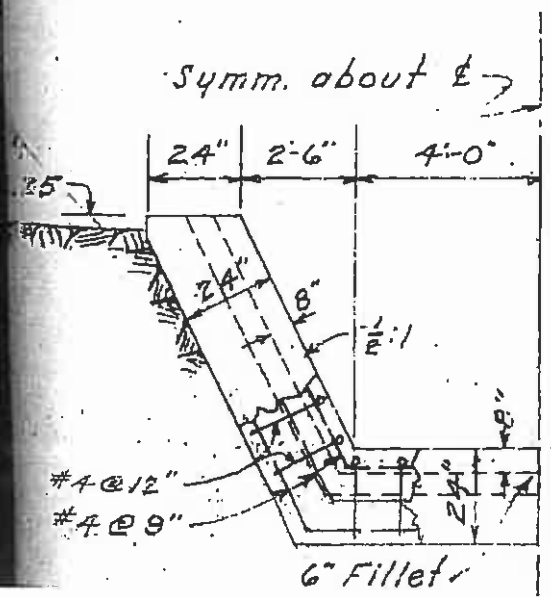
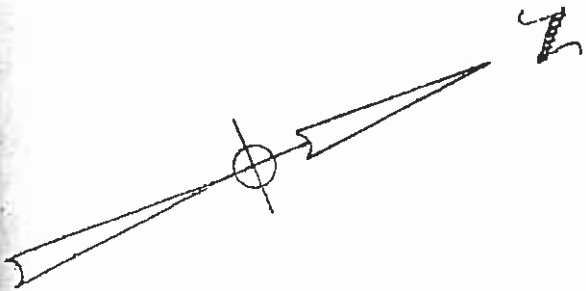
Major Construction Specifications:

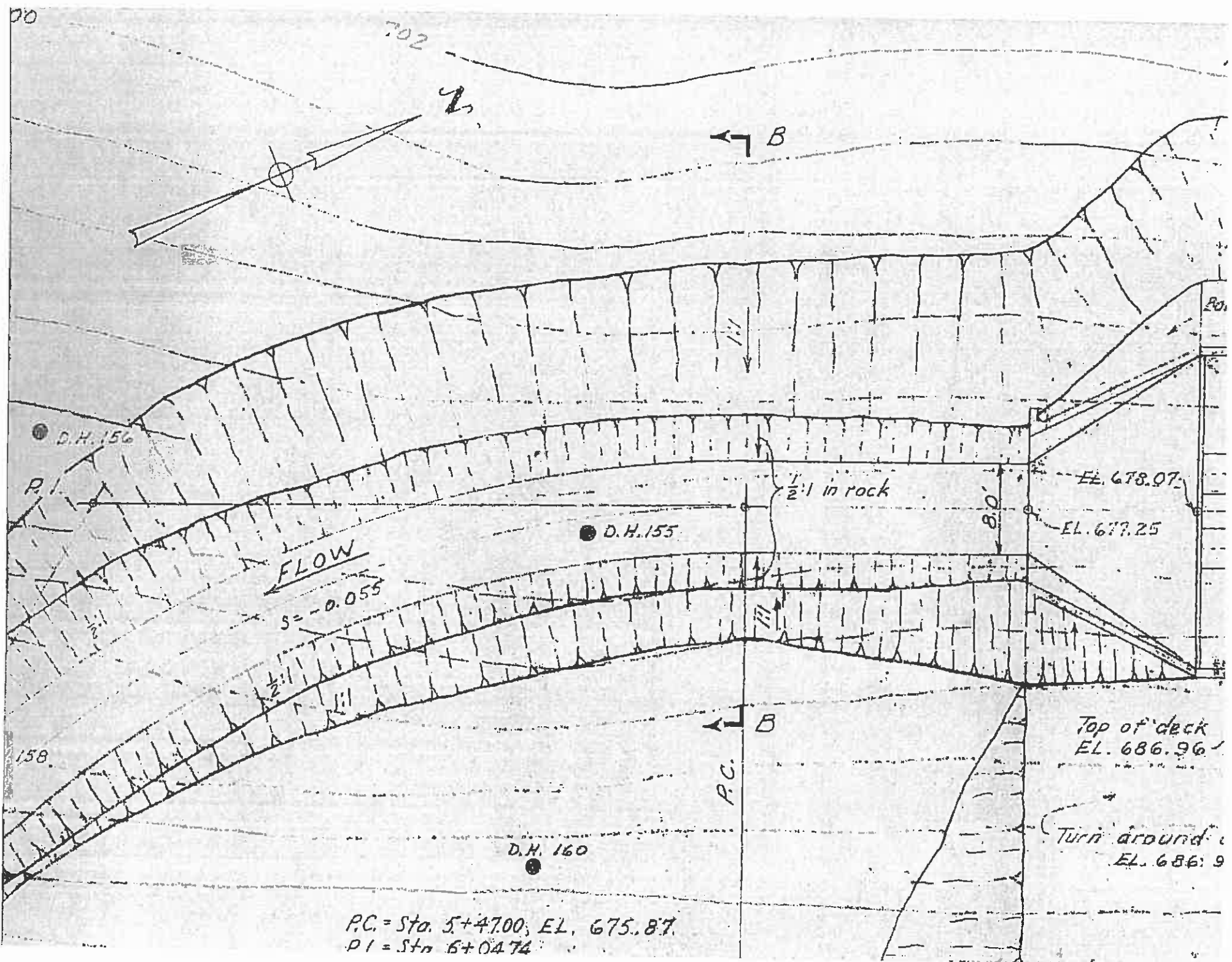
Spec. DC-4323, Cherf Bros., Inc. and Sandkay, Contractors, Inc. Ephrata, Washington.

Deficiencies:

wasteway channel is unstable.







00

702

← B

D.H. 156

D.H. 155

D.H. 160

FLOW  
S = -0.055

1/2:1 in rock

80'

EL. 678.97

EL. 677.25

Top of deck  
EL. 686.96

Turn around  
EL. 686.9

P.C.  
↑ B

P.C. = Sta. 5+47.00, EL. 675.87  
P.I. = Sta. 6+04.74

158

20

