

Please return to:

*Executive Assistant
Kennewick Irrigation District
2015 South Ely Street
Kennewick, WA 99337*

KENNEWICK IRRIGATION DISTRICT RESOLUTION 2021-09

Authorization for Collection of Surcharges for Properties in the MC 10.2-1, MC 11.0-1, MC 11.3-1, and MC 11.9-1 Service Areas

A **RESOLUTION** of the Board of Directors of Kennewick Irrigation District (KID), Benton County, Washington, relating to certain rates, charges and assessments; establishing certain rates, charges and surcharges and directing assessment process related to the KID MC 10.2-1, MC 11.0-1, MC 11.3-1, and MC 11.9-1 Service Areas; authorizing and directing actions.

Section 1. RECITALS AND FINDINGS.

1.1 The KID traditional service areas of MC 10.2-1, MC 11.0-1, MC 11.3-1 and MC 11.9-1 are all directly connected to the Main Canal for water delivery.

1.2 Water delivered from KID canals are required to be taken on a minimum 24-hour basis. This requirement is related to the reduction in carrying capacity of the canals as they flow to the end of the reach.

1.3 On-Demand service is defined as the ability to take or stop water delivery without prior notification to KID. Water changes will be required to notify KID as soon as is practicable following the change, but no longer than 1 business day.

1.4 Due to the continued canal lining, automated gates, and in-line canal storage, KID can provide limited on-demand service to properties to be served directly from the canal system.

1.5 Canal System improvements are planned to include additional construction of reservoir storage for the purpose of providing supplemental water supply during years of low water supply. An additional benefit of this storage will be to allow water delivery on an on-demand basis to utilize water more efficiently and provide better water use flexibility to KID customers.

1.6 Water delivery during times of low water supply will still be limited to a peak instantaneous amount and a monthly maximum volume pursuant to Board Action in the management of that low water supply year.

1.7 It is appropriate to charge customers for the additional availability and capacity of on-demand service.

1.8 This resolution applies to four (4) traditional services areas encompassing 17 parcels representing 352.92 irrigable acres. A map depicting the traditional service areas and corresponding properties is attached as Exhibit 1. These four (4) areas have been selected by request from the customers and are within a current KID Canal lining project area.

This Resolution sets forth KID’s program for the system improvement and necessary financial support from assessments against benefited properties, and from rates and charges (including charges in lieu of assessments) for the MC 10.2-1, MC 11.0-1, MC 11.3-1, and MC 11.9-1 Service Areas.

Section 2. SERVICE AREAS. The Service Areas for this Resolution area as follows:

- A. MC 10.2-1 includes 4 parcels, 93.72 irrigable acres.
- B. MC 11.0-1 includes 10 parcels, 58.9 irrigable acres.
- C. MC 11.3-1 includes 2 parcels, 189.2 irrigable acres.
- D. MC 11.9-1 includes 1 parcel, 11.1 irrigable acres.

Section 3. SURCHARGE.

3.1 The following charges apply as “KID Surcharges for System Improvements.” The surcharge applicable to these properties shall be calculated as follows.

3.2 The surcharge shall have two components:

- A. The surcharge will be determined based the Equivalent Irrigation Units (EIU’s) that apply to a property. The number of EIU’s applicable to the property is based on the difference of the base flow to the probable peak flow (2.8 gpm per irrigable acre) or the actual peak flow on record for that delivery(ies), whichever is higher. The surcharge per EIU will be the storage component of the EIU charges for the Southridge and Clodfelter Masterplan Areas, or \$378.22 per EIU; and
- B. The surcharge will be for each traditional service location, and be based on the average cost of a meter and associated controls/reporting, or \$2,500 per traditional service location.


3.4 The surcharge will be collected in one payment before the property is provided on-demand service.

Section 4. ASSESSMENT. All properties within the MC 10.2-1, MC 11.0-1, MC 11.3-1, and MC 11.9-1 water service area may also be subject to annual assessments (or a charge in lieu of assessment) for the cost of irrigation water service.

Section 8. IMPLEMENTATION. The KID District Manager is hereby authorized and directed to take such action as appropriate and necessary to administer and enforce this Resolution.

Section 9. REPEALER; FUTURE ACTIONS. Any KID act prior to and inconsistent with this Resolution is hereby superseded and repealed. Nothing in this Resolution shall limit the future authority of KID to modify, rates charges and assessments.

RESOLUTION 2021-09 IS HEREBY ADOPTED by the Board of Directors of Kennewick Irrigation District, Benton County, Washington, at a regular open public meeting with a quorum present thereof this 16th day of February, 2021.

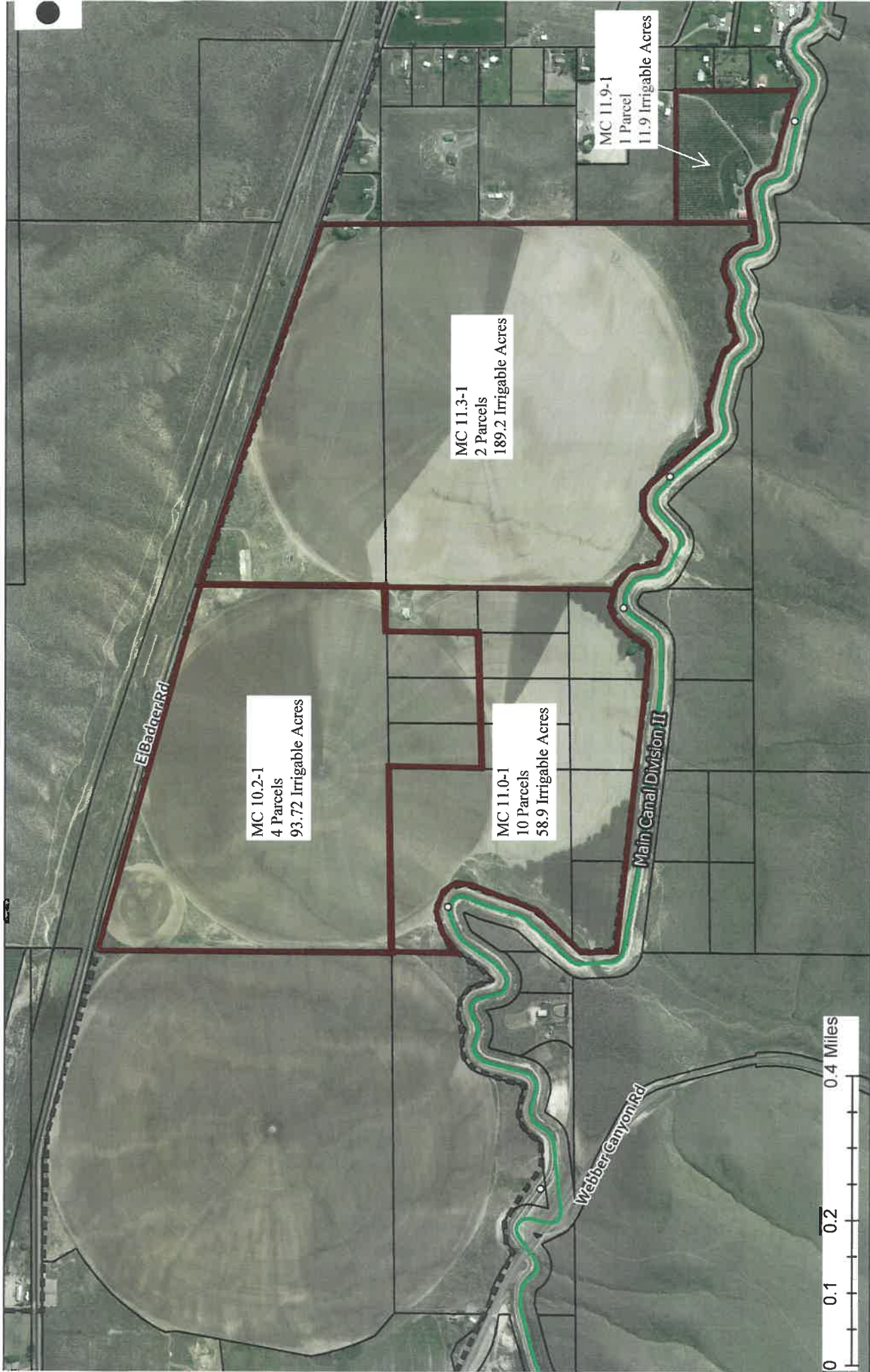

Gene Huffman, President


Kirk Rathbun, Vice President


David McKenzie, Director

ABSENT
Arland Ward, Director


Dean Dennis, Director



Legend

-  BC Boundary
-  Turn Out

Exhibit 1 Resolution 2021-09 SurchARGE Service Areas

The Kennewick Irrigation District does not warrant, guarantee, or accept any liability for the accuracy, precision, or completeness of any information shown or described herein or for any inferences made therefrom. Any use of this information is solely at the risk of the user.

